

OUR NEWS

Crewe & District Branch

Issue 08

October 2012

Autumn Newsletter



This year so far...

We have had a busy year so far, with members of the branch having been involved in a number of events, both social and fundraising. Most of the monies raised have been sent to Head Office for Research, the remainder has been kept by the branch to help fund local events such as Afternoon Tea at Crewe Hall and the Christmas lunch. We are always looking into ways of involving members with events and would welcome any suggestions you have.

Frock Exchange



A "Frock Exchange" was held in November 2011 at Crewe Hall which raised £1400. It was supported by Return on Investments Limited, Nantwich, Something Pretty, and Cinderellas in Nantwich and Grenson's Crewe. The event was a great success and very well attended. Lots of outfits were donated and then re-purchased making this an environmentally friendly event!

Burns Night



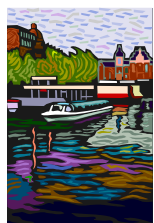
In November members of the committee were involved in representing the charity by attending a Burns Night celebration at Richmond Village, raising money for local charities. A total of £480 was raised on the night and the lucky charity receiving the money was CLIMB (Children Living with inherited MetaBolic Diseases). Our congratulations to them!

Lunch at Minshulls Garden Centre

The branch organised a subsidised lunch for branch members on May 2nd. Carole Buckingham went along to the event with her friend Joyce on a lovely sunny day. They had a great time chatting to other members they had not seen for a while. All the guests gathered in the new conservatory and had a very enjoyable meal and afternoon. They finished the afternoon with a walk around the nursery where Carole spent more money on plants and bread flour, for her wonderful breads. They are looking forward to next year's event already!



Canal Walk



On 13th May, 220 people walked along the Shropshire Union Canal from Nantwich to Chester and managed to raise an amazing £22,578.20 for Parkinson's UK, in sponsorship money! The original idea came from Pat Robinson and her friends who decided that their 40 regular strong walking group might like to walk along the canal and raise some money for Parkinson's at the same time. Joanne Dobbie, the North West Fundraising Manager, got involved and the

event grew with people walking 5, 10 or 17 miles on a lovely sunny Sunday afternoon. All proceeds raised have gone directly to Head Office to be used for vital research into Parkinson's. Many thanks must go to Pat Robinson, her team and members of the branch who helped organise the event but most importantly, those took part on the day and raised all the money.

Jubilee Fun Day



Belong Community Village in Crewe held a Jubilee Fun Day on the 4th June at which a number of members attended. In addition to having fun a total of £107.10 was raised for Parkinson's on the day.

North Staffs 30th Birthday Party

North Staffs branch invited members of our branch to attend their 30th birthday party which was held at Port Vale Football Club on 7th July. An enjoyable time was had by all those who attended and in addition the sum of £92.86 was raised on the day for branch funds.



Balloon Race

On the 14th July, for the second year running, Richmond Village held a Balloon Race in aid of Parkinson's. This year the weather was fine as the balloons were released and there was a good wind to help them on their way. A total of £1000 was raised for Parkinson's local branch as a result of Andrew Connolly Practice (Accountants of Sandbach), donating the cost of the bio-degradable balloons and name cards. A huge thank you goes to them. The winner of the race was Mr E Mayer whose balloon travelled the furthest distance to Northampton.



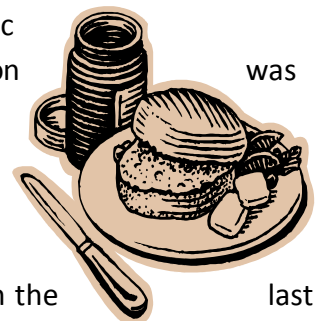
Afternoon Tea at Crewe Hall



Naughty but nice... the 17th July saw what is now the annual gathering for afternoon tea in the grand setting of Crewe Hall. The event was attended by 30 members and friends. From the feedback we received it seems an enjoyable time was had by all!. A number of donations were presented at the event including one from a small group living in Spain organising coffee mornings etc.

Garden Party

On a wonderful sunny afternoon on 26th August, we held our first garden party in the beautiful grounds of Hatherton Lodge. We organised a number of stalls on the front lawn with live music and in the walled garden, we had cream teas and a BBQ. An enjoyable afternoon had by all. We raised a total of £1200 for the branch and would like to thank all those people who donated their time and resources to make the event a success.



Winsford Branch Meetings

The Winsford Parkinson's is a friendly group who meet up at the Dingle Centre on the last Wednesday of the month for tea, biscuits and a chat. We have the occasional speakers, quizzes, Parkinson's information & updates plus joining up with Crewe for main social events. New members are made very welcome. We would like to thank the Winsford Group for their continued support and for all the help they give us at the monthly meetings. We appreciate it very much. Sandra & John Gott

What's left to come this year...

Branch Meetings

We have organised the following branch meetings at Belong, Brookhouse Drive, Crewe CW2 6NA. These events start at 7.30pm and everybody is welcome.

Tuesday 16th October – Quiz night with buffet

Tuesday 20th November – Pub Games with buffet.

Young at Heart Group

This informal meeting continues at The Duke of Gloucester Pub on the 4th Thursday of the month at 7.30pm. Numbers are steadily increasing and a good time is had by all. A light buffet is provided free to members.

Fundraising Events

Sandbach School Big Band and Matthew Ford – Joint fundraiser

The Branch is busy organising a Big Band night on Friday 23rd November at 7.30pm to be held at the Civic Hall, Nantwich, CW5 5DG Tickets £15 to include licenced bar, disco and silent auction.

Having fronted the legendary Syd Lawrence Orchestra for over 5 years Matthew Ford was voted 'Best UK Male Big Band Vocalist' in 2006 and later that year was invited to perform with the world famous Halle Orchestra at the Bridgewater Hall in Manchester. March 2007 saw Matthew nominated alongside Jamie Cullum and Ray Gelato for UK Male Singer of the Year' in the Ronnie Scott's Jazz Awards. Since then he has fronted the RTE Orchestra, Royal Liverpool Philharmonic Orchestra, the BBC Concert Orchestra and the BBC Big Band to name but a few and appeared on the BBC Proms. For the past 4 years Matthew has performed at sell out concerts with the Sandbach School Big Band working alongside not only instrumentalist but taking the opportunity to nurture some of the areas young vocal talent also

The Branch have teamed up with Sandbach School to organise this joint fundraiser. All proceeds to be shared between us both.

Tickets are £15.00 available from Sandbach School 01270 758870, or Sue Pickup and members of the Committee, or text the branch mobile number on 0759255427

Christmas Lunch



Our Christmas Lunch has been booked for Saturday 8th December, 1pm at The Waverley Hotel, 9 Pedley Street, Crewe CW2 7AA Tel: 01270 256223. Please complete the enclosed menu choice and return to Jenny Sadler together with full payment for the lunch by 25th

November at the latest. The branch is able to subsidise the lunch for members. The cost is £10.00 for members and £13.95 for non-members. We shall be having a raffle and any donations will be gratefully received. A free minibus will be available to pick up from the Dingle, Winsford and return after the event. Sandra Gott will have the details nearer the time.

Belong Christmas Market

On Sunday the 16th of December Belong Community Village in Crewe are holding their annual Christmas Market from 12 noon until 4pm. The event is free and everybody is welcome to attend. The Branch has been invited to have a stall. If anyone has any suitable items for the stall or can help on the day please speak to a committee member or ring 0759255427

Research

As a member of Parkinson's Research Network the Branch Chairman, Dennis Fricker, attended "Together" meeting at Telford on the 5th September, where there was a discussion on the number and range of projects currently being undertaken by Parkinson's UK. This year £5m will be spent sponsoring some 90 projects. All projects are subject to vetting by both experts and lay members before approval. Any member who is interested in finding out more, please make contact with Head Office where visits can be arranged for Network members to see the researchers work for themselves.

AGM

Members, friends and associates of Crewe & District Branch of Parkinson's UK are invited to the 2013 AGM of YOUR local branch. Please come along and help shape YOUR society for the future.

Nominations are wanted for more committee members and all the officers for 2013 will be elected by members present on the night. Nomination with the membership number of the proposer and seconder should be sent to the secretary Angela Allinson at Hatherton Lodge, Lodge Lane, Hatherton, Nantwich CW5 7LD asap. Late nominations will be accepted on the night.

The AGM will be followed by a cheese and wine evening

Venue : Belong Crewe, Brookfield Drive, Crewe CW2 6NA

Date: Tuesday 5th February 2013

Time: 7.30pm

We're the Parkinson's support and research charity. Help us find a cure and improve life for everyone affected by Parkinson's.

INFORMATION

Local Branch Contact Details

Information Support Worker, Sue Hughes Tel: 0844 225 2756

Chairman, Dennis Fricker Tel: 01270 763149

Branch Secretary, Angela Allinson Tel: 01270 841465 mail@angelaallinson.co.uk

Website: www.crewe-parkinsons.org Email: creweanddistrictparkinsons@live.co.uk

Free* confidential helpline **0808 800 0303**.

Monday to Friday 9am–8pm, Saturday 10am–2pm. Interpreting available.

Textphone 0800 111 4204.

*calls are free from UK landlines and most mobile networks.

Visit us online at parkinsons.org.uk

Drop us a line at hello@parkinsons.org.uk